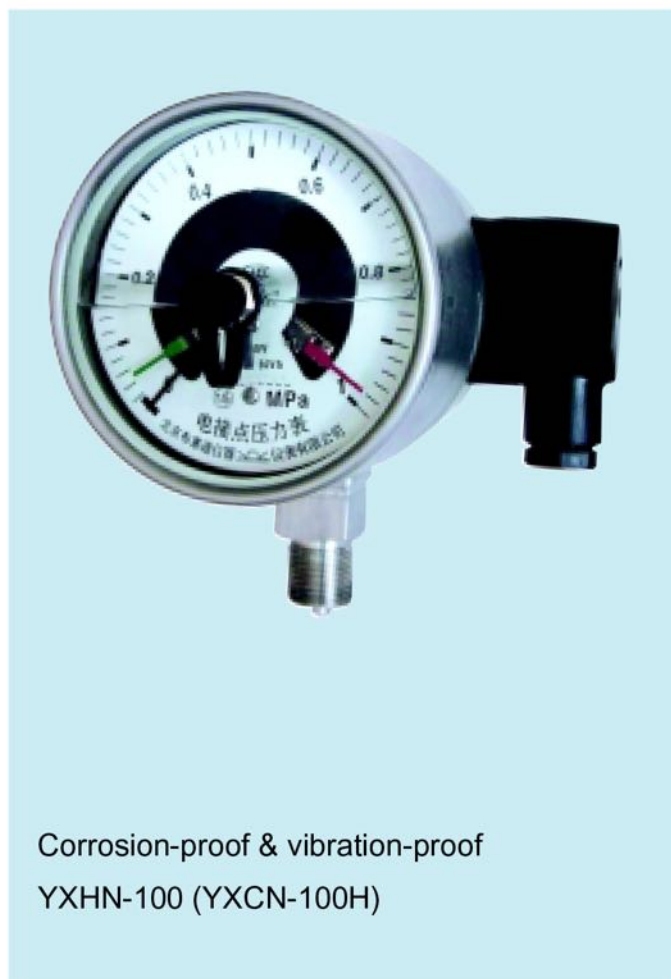
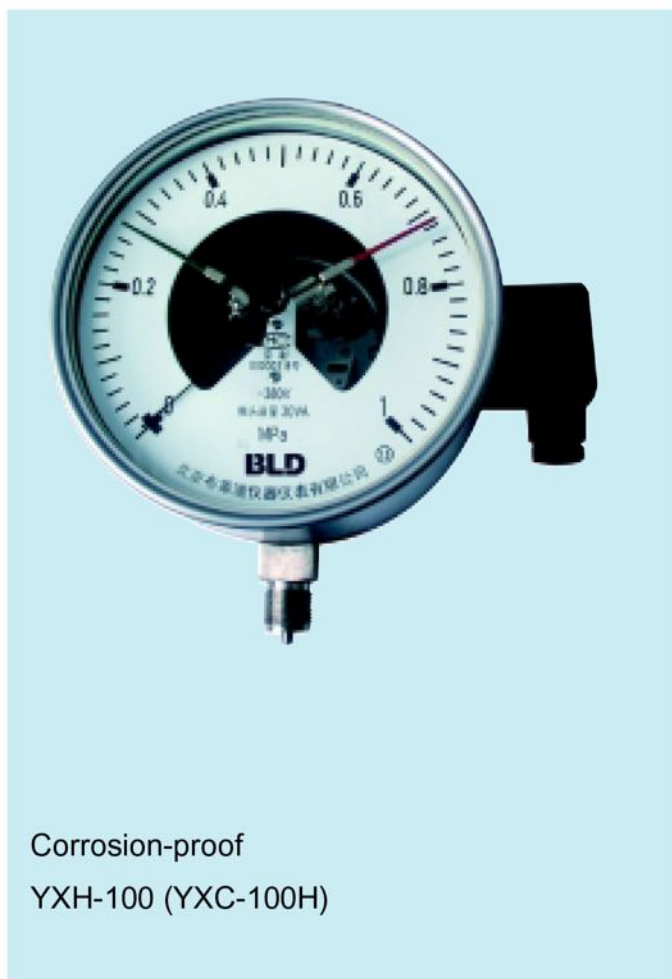


(Solid model) Stainless steel electric contact pressure gauge

(Solid model) Stainless steel vibration-proof electric contact pressure gauge (oil filling)






Application

The materials of element for measuring pressure and case are both stainless steel, Suitable for measuring the strong corrosion gaseous and liquid medium pressure.

Application

Both gauges are filled with oil for vibration-proof indication, suitable for the adverse service conditions where sharp pulsation and vibration exist.

Model		Stainless steel corrosion-proof Electric contact pressure gauge	Stainless steel vibration-proof with oil filling Electric contact pressure gauge
Mounting			
Bottom mounting direct Φ 63mm diameter Φ 100mm diameter Φ 150mm diameter Φ 160mm diameter		YXH-63. AO (YXC-63H) YXH-100. AO (YXC-100H) YXH-150. AO (YXC-150H) YXH-160. AO (YXC-160H)	YXHN-100. AO (YXCN-100H) YXHN-150. AO (YXCN-150H) YXHN-160. AO (YXCN-160H)
Back mounting direct Φ 100mm diameter Φ 150mm diameter		YXH-100. BO (YXC-100HZ) YXH-150. BO (YXC-150HZ)	YXHN-100. BO (YXCN-100HZ) YXHN-150. BO (YXCN-150HZ)
Back embedded mounting Φ 100mm diameter Φ 150mm diameter		YXH-100. BT (YXC-100HZT) YXH-150. BT (YXC-150HZT)	YXHN-100. BT (YXCN-100HZT) YXHN-150. BT (YXCN-150HZT)



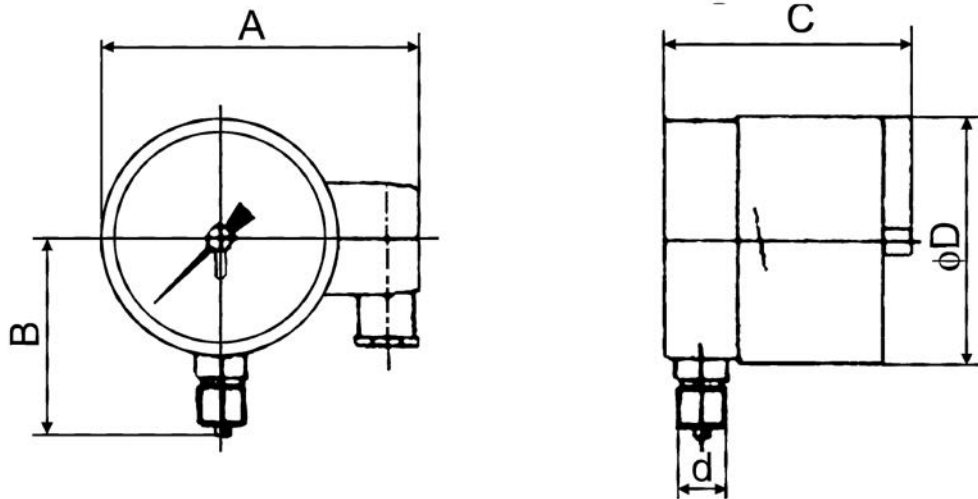
Fitting Diaphragm Seal

Composing with our diaphragm seals in different materials, the above pressure gauges can also be made into the electric contact diaphragm pressure gauges that are applied in measuring viscous, strongly corrosive medium as well as the crystallographic medium.

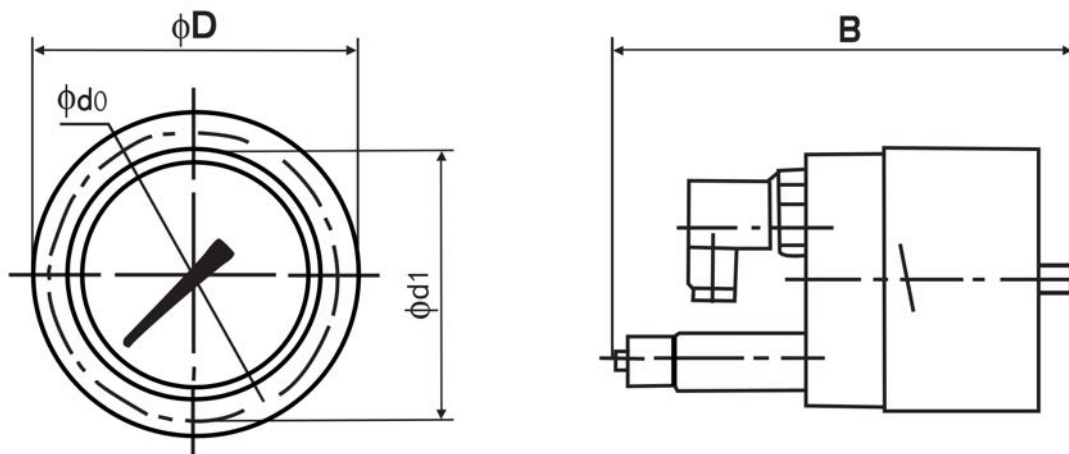


Please see Diaphragm Seal Pressure Gauge for more flange diaphragm seals.

DIMENSIONS



Model \ Dimention		A (mm)	B (mm)	C (mm)	D (mm)	d (mm)
Without mounting loop	Diameter 63mm	25	59	78	64	G $\frac{1}{4}$ "
	Diameter 100mm	136	90	95	101	M20 \times 1.5 or other specifications
	Diameter 150mm	190	120	95	149	
	Diameter 160mm	193	125	98	161	



Model \ Dimention		A (mm)	B (mm)	C (mm)	D (mm)	d (mm)
With mounting loop	Diameter 100mm	136	90	95	101	M20 \times 1.5 or other specifications
	Diameter 150mm	190	120	95	149	